

1 year limited warranty

Your Drive branded product is warrantied to be free of defects in materials and workmanship for 1 year from the date of purchase for the original consumer purchaser.

This device was built to exacting standards and carefully inspected prior to shipment. This Limited 1 Year Warranty is an expression of our confidence in the materials and workmanship of our products and our assurance to the consumer of years of dependable service.

This warranty does not cover device failure due to owner misuse or negligence, or normal wear and tear. The warranty does not extend to non-durable components, such as rubber accessories, casters, and grips, which are subject to normal wear and need periodic replacement.

If you have a question about your Drive device or this warranty, please contact an authorized Drive dealer.



© 2014 Medical Depot, Inc. All rights reserved.
Drive is a trademark of Medical Depot, Inc.
Port Washington N.Y. 11050 USA Made in China

magnetic pull cord alarm

item # 13603



EU Authorized Representative
Drive Medical LTD
Ainley's Industrial Estate
Elland, West Yorkshire,
United Kingdom HX5 9JP

www.drivemedical.com

A large, stylized version of the Drive logo, oriented vertically. The word "drive" is written in a bold, white, lowercase sans-serif font. A small yellow square is positioned above the letter "i". A trademark symbol (TM) is located at the top right of the word.

installation

The Drive Pull Cord Alarm helps prevent falls and improves safety by alerting caregivers when a person attempts to exit a wheelchair or bed without assistance. A pull on the cord from any direction will dislodge the Magnetic Sensor and activate the alarm. The alarm attaches easily to a wheelchair with included holster and strap, or to a bedside or headboard with included hook and loop fastener strip or mounting screws.

battery information

1. Unit uses one 9V battery, included.
2. To insert the battery:
 - a. Slide battery cover to open. (Figure 1)
 - b. Insert battery. When inserting battery observe the battery type and polarity (+/-) marking on the unit. Insert battery accordingly.
 - c. Replace the battery door. Make sure that the rubber seal is properly positioned.
3. The unit is also AC adaptable. (Adapter sold separately)

testing battery strength

1. Turns the unit on. Remove the Magnetic Sensor for an audio verification of alarm sound.
2. Press the Battery Check Button and observe the brightness of the LED indicator to assess the battery strength. As the light begins to dim, replace battery immediately. (Figure 2)

use

1. Attachment to a wheelchair:
Pull Cord Alarm is supplied with a holster for attaching the unit to a wheelchair. Insert the strap in the holster and hang on push handle of wheelchair.
2. Attachment to the bed:
 - a. For a more secure attachment, use the mounting screws included to secure the holster to the headboard.
 - b. A hook and loop fastener strip is also supplied for easy attachment of the unit to any flat surface such as a headboard or the side of a bed.
3. Place the Magnetic Sensor in the sensor area. Turn the unit on by sliding the on/off switch to "LO" or "HI". (Figure 2)
4. Secure the Magnetic Sensor to the patient by clipping the attached cord to the patient's clothes. Clip the cord to a piece of clothing the patient is not likely to remove. The clip should be located out of the patient's reach, if possible. Be sure that the long pull cord cannot entangle or choke the patient. Use the Cord Adjuster to adjust the length of the pull cord.
5. A pull on the cord from any direction will cause the Magnetic Sensor to release from the sensor area to sound the alarm. The alarm will sound in a cycle of approximately 3 seconds on, 2 seconds off to minimize annoyance to the patient and surrounding occupants.
6. Stop the alarm either by replacing the Magnetic Sensor or turning the unit off with the on/off switch.

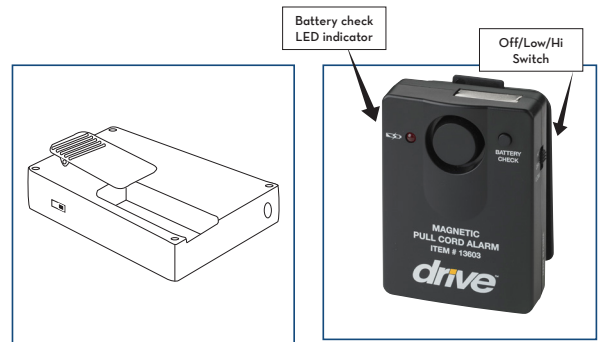


figure 1

figure 2